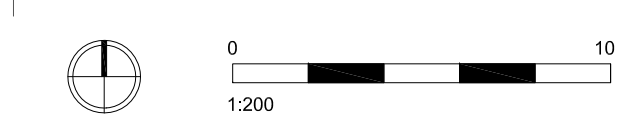
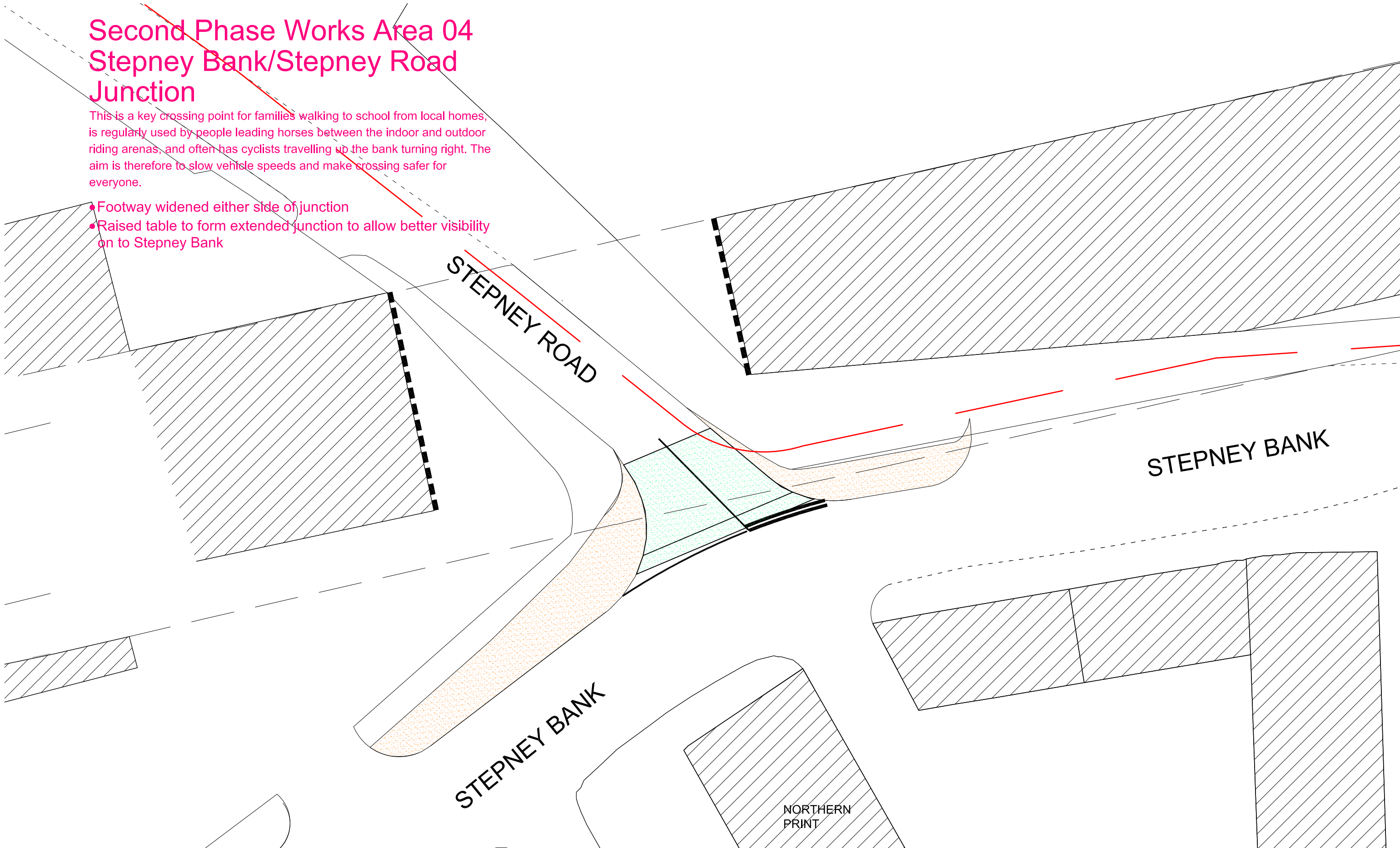


# Second Phase Works Area 04 Stepney Bank/Stepney Road Junction

This is a key crossing point for families walking to school from local homes, is regularly used by people leading horses between the indoor and outdoor riding arenas, and often has cyclists travelling up the bank turning right. The aim is therefore to slow vehicle speeds and make crossing safer for everyone.

- Footway widened either side of junction
- Raised table to form extended junction to allow better visibility on to Stepney Bank



COPYRIGHT RETAINED BY XSITE ARCHITECTURE LLP. DO NOT SCALE : CHECK ALL DIMENSIONS ON SITE. ANY ERRORS OR DISCREPANCIES TO BE REPORTED TO XSITE ARCHITECTURE LLP IMMEDIATELY. SITE INFORMATION SUPPLIED BY THIRD PARTIES CANNOT BE GUARANTEED FOR ACCURACY. ALL FEATURES AND DIMENSIONS ARE SUBJECT TO CONFIRMATION BY LEGAL, SERVICE, UTILITY AND TOPOGRAPHICAL SURVEY DOCUMENTATION.

revisions	<b>1422</b>	project	0191 287 2161
	<b>300 05</b>	DIY STREETS	
	<b>DESIGN</b>	Ouseburn Futures	
		drawing title	scale paper
		STEPNEY ROAD/STEPNEY BANK JUNCTION	1: 200 A3
			drawn checked
			L TB

**xsite architecture LLP**